

SERVA Bluemager

SERVA

*serving
scientists!*

Fluorescence Gel Imager

SERVA Bluemager

The SERVA Bluemager is a compact fluorescence gel documentation system with user-friendly features of easy operation and quick response when in WiFi environment under stand-alone condition. The imaging system consists of a scientific CCD camera, motor driven lens, RGB light illuminator for gel sizes up to 255 mm x 195 mm, and a white light transilluminator. The five-fold filter changer is equipped with a 595 nm filter; 535 and 665 nm filters are available on request.

Fluorescence stains such as SERVA Lightning Red, SERVA Lightning Sci3, Cy3®, SERVA Purple, SERVA Fluo-R and SYPRO Ruby are detectable with the standard emission filter. Using additional filters (e.g. 535 nm and 665 nm), SERVA Lightning Sci2, SERVA Lightning Sci5, Cy2®, Cy5®, SERVA DNA Stain Clear G, SYBR stains etc. can easily be detected and captured by SERVA Bluemager.

- Wide applications for fluorescence detection
- For gel sizes up to 255 mm x 195 mm
- Pre-label your protein sample with SERVA Lightning Red for immediate gel documentation after electrophoresis without staining/washing steps
- High sensitivity: detection limit may reach to 1 ng
- Ready for DIGE, multiplex analysis
- Cost efficient - affordable fluorescence gel imager system for research and diagnostics

Convenient operation

Followed the design concept of a single, independent workstation with a single all-in-one processor embedded inside, Bluemager does not require any extra desktop computer to operate the system on. The 8" built-in touch screen LCD panel can directly handle the image data without any difficulty. Moreover, the Bluemager's smart user interface and vivid icons can rapidly capture gel images with high accuracy. With the use of Bluemager, you will enjoy a worry-free experience in collecting the gel imaging data while conducting some advanced fluorescence staining related experiments in your research.

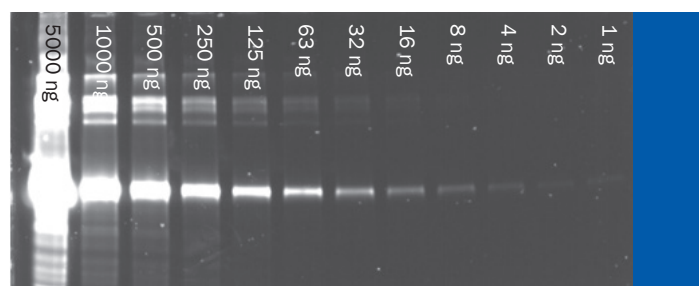


Applications

The three light sources in the SERVA Bluemager are red, green, and blue LED lights. Thus, a wide range of fluorescence applications may be processed through light source excitations:

Blue light applications:

SERVA Lightning Red (1D, 2D), SERVA Purple, SERVA Lightning Sci2, Cy2®, SERVA Fluo-R, SERVA DNA Stain Clear G, SYBR stains, SYPRO Ruby, FITC, ethidium bromide, etc....



BSA samples have been pre-labelled with SERVA Lightning Red prior to SDS PAGE. Immediate detection by Bluemager after electrophoresis, no staining or washing steps required.

Green light applications:

SERVA Lightning Sci3, Cy3®, AlexaG 546, AlexaG 555, AlexaG 568, Nile red, Rhodamine B, TRITC, etc....

Red light applications:

SERVA Lightning Sci5, Cy5®, AlexaG 647, AlexaG 660, allophycocyanin, TO-PROG-3, etc....

Cy2, Cy3 and Cy5 = trademarks of GE Healthcare Company

Ordering Information

Product	Quantity	Cat. no.
SERVA Bluemager	1 system	BI-RGB